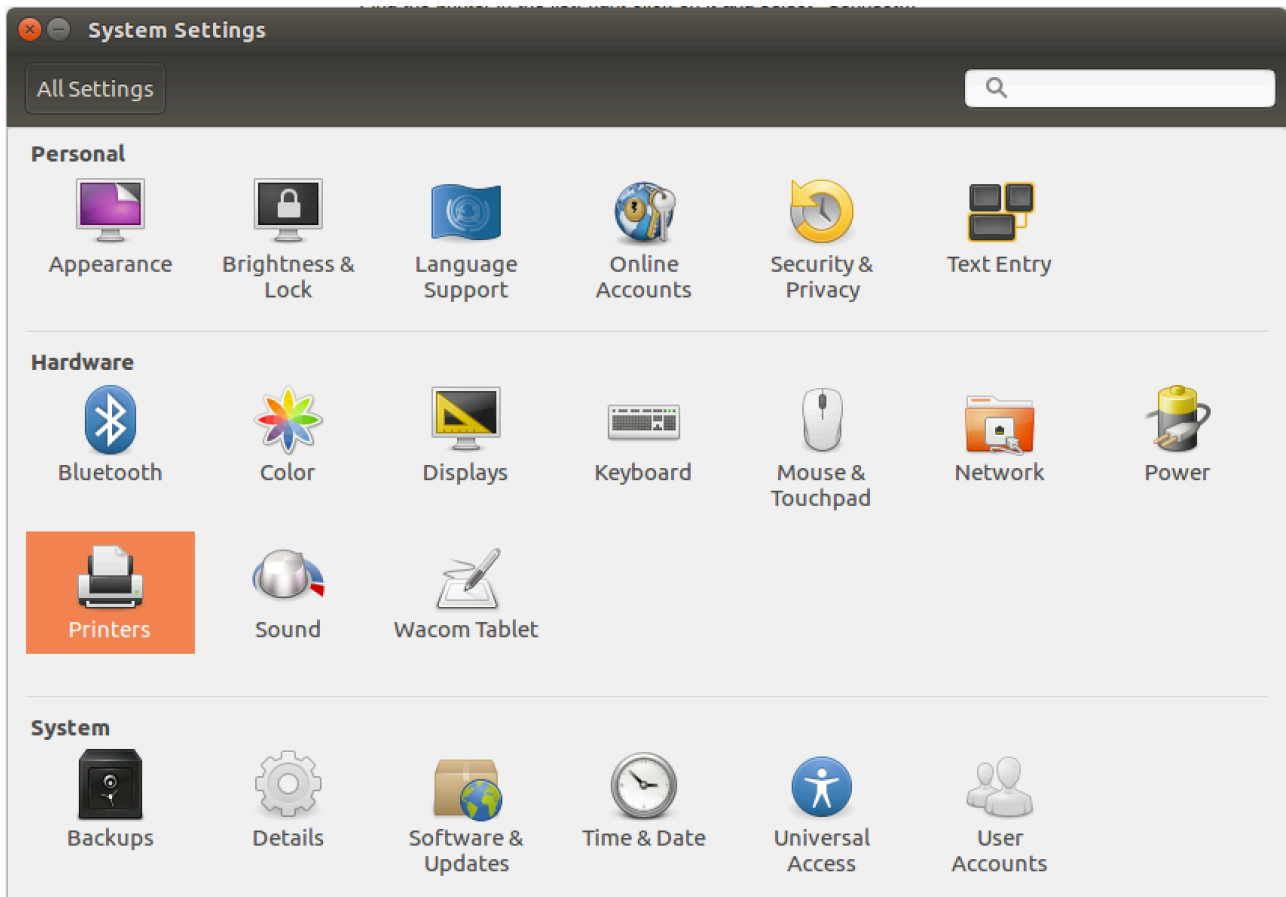
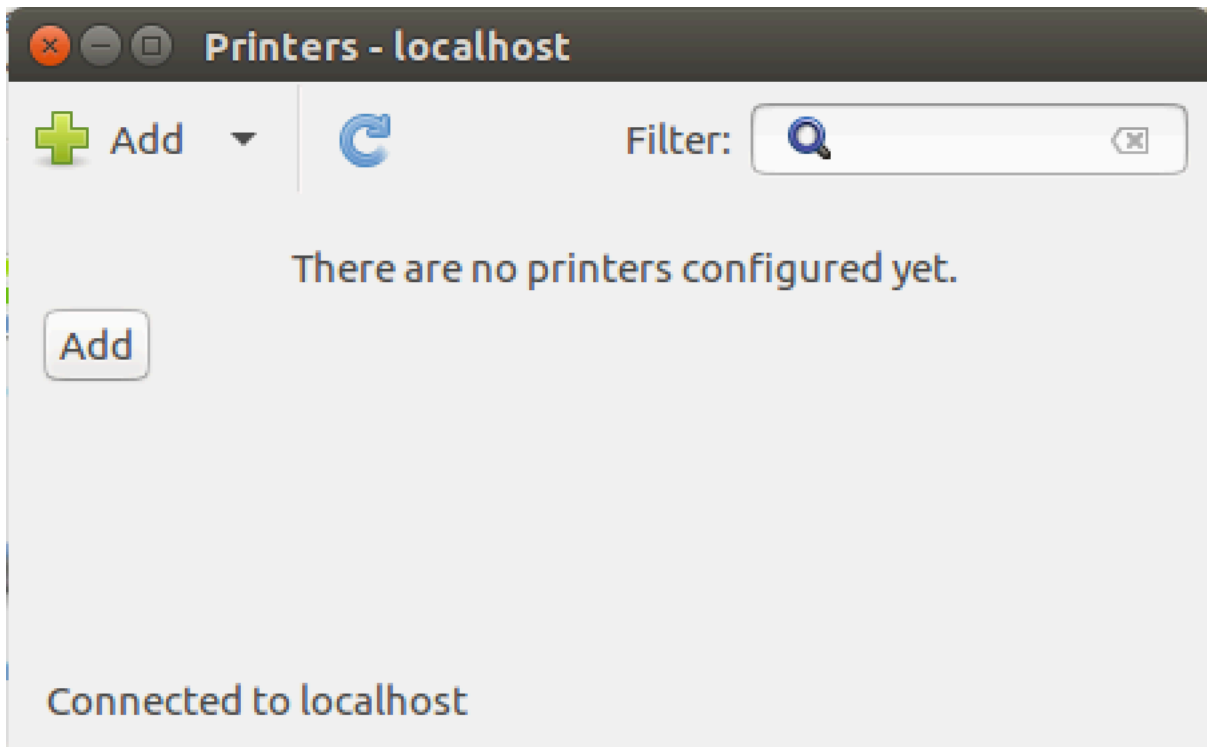


This guide shows you how to install DTU's network printers.
The guide was made off an Ubuntu 13.04 system, other Linux distribution may differ.

Open up System Settings and head into the Printers settings

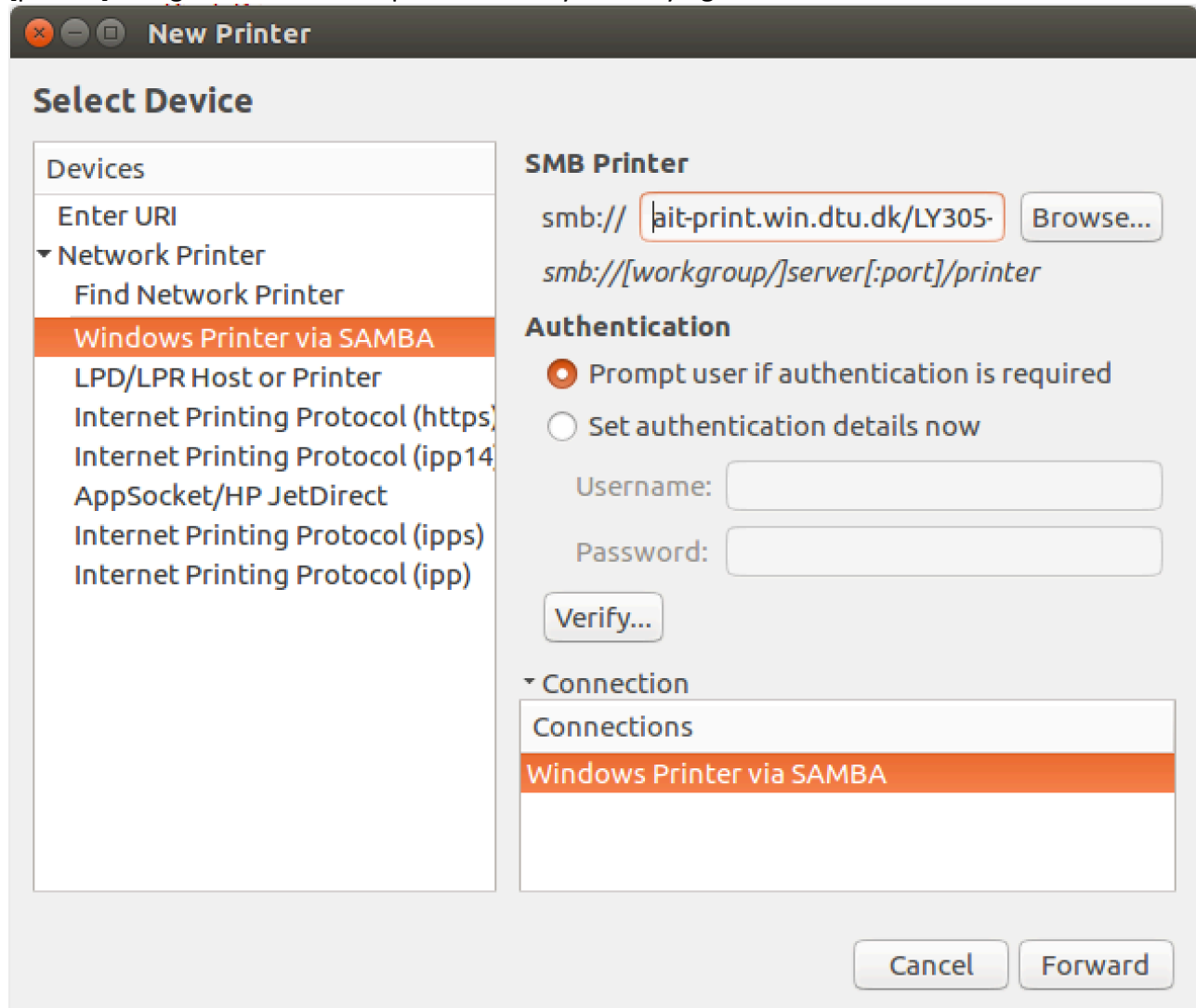


In the Printer settings, press on “Add” to add a new printer.

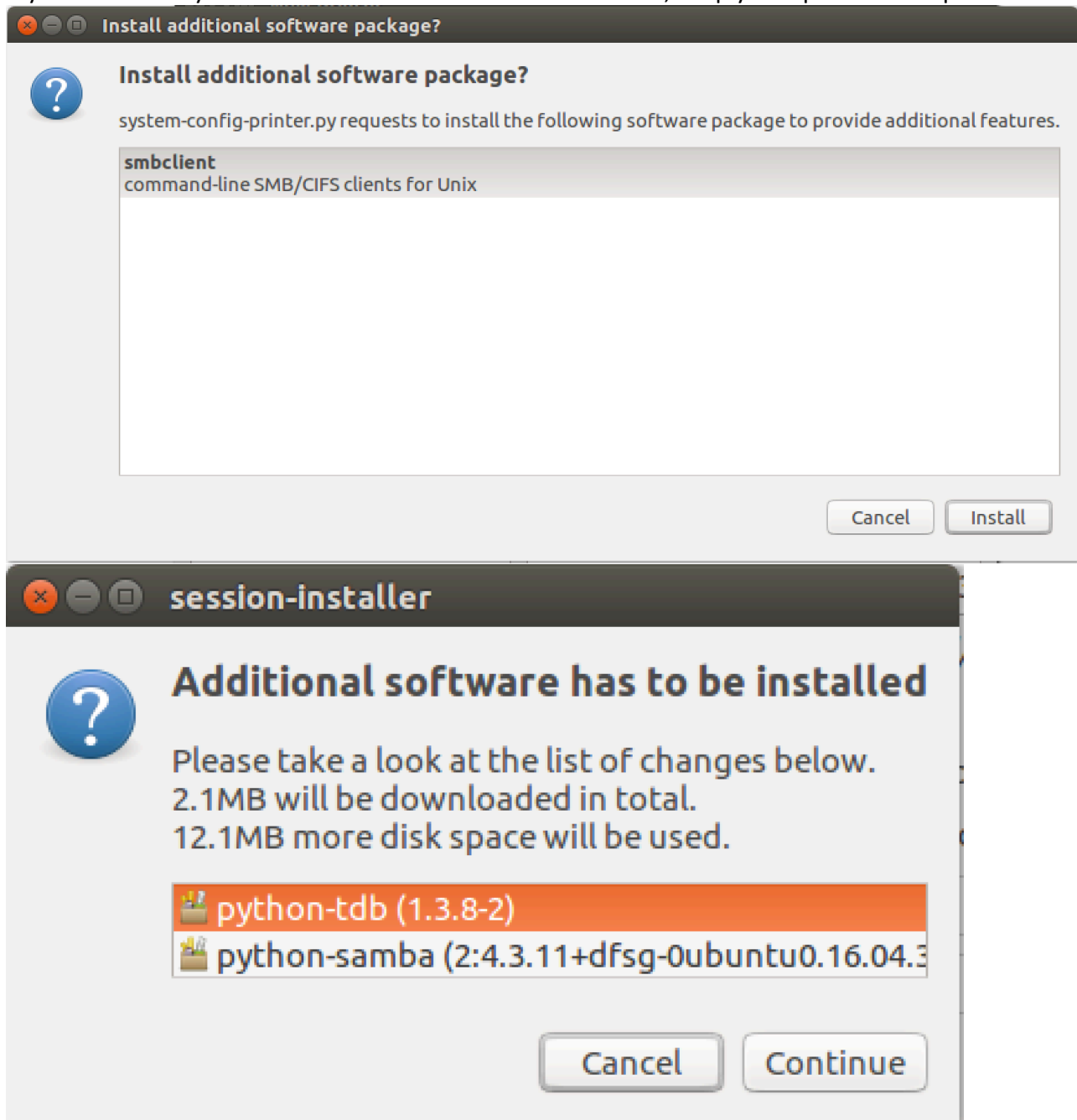


Choose Network Printer and then Windows Printer via SAMBA on the left section. On the right section you add the printer via an address like so ait-print.win.dtu.dk/LY305-101A-CO1

Usually there's a label on the printer with the printer name you'd use like LY305-101A-CO1 Under smb:// you write ait-print.win.dtu.dk/[printer] [printer] being the name of the printer which you're trying to install.

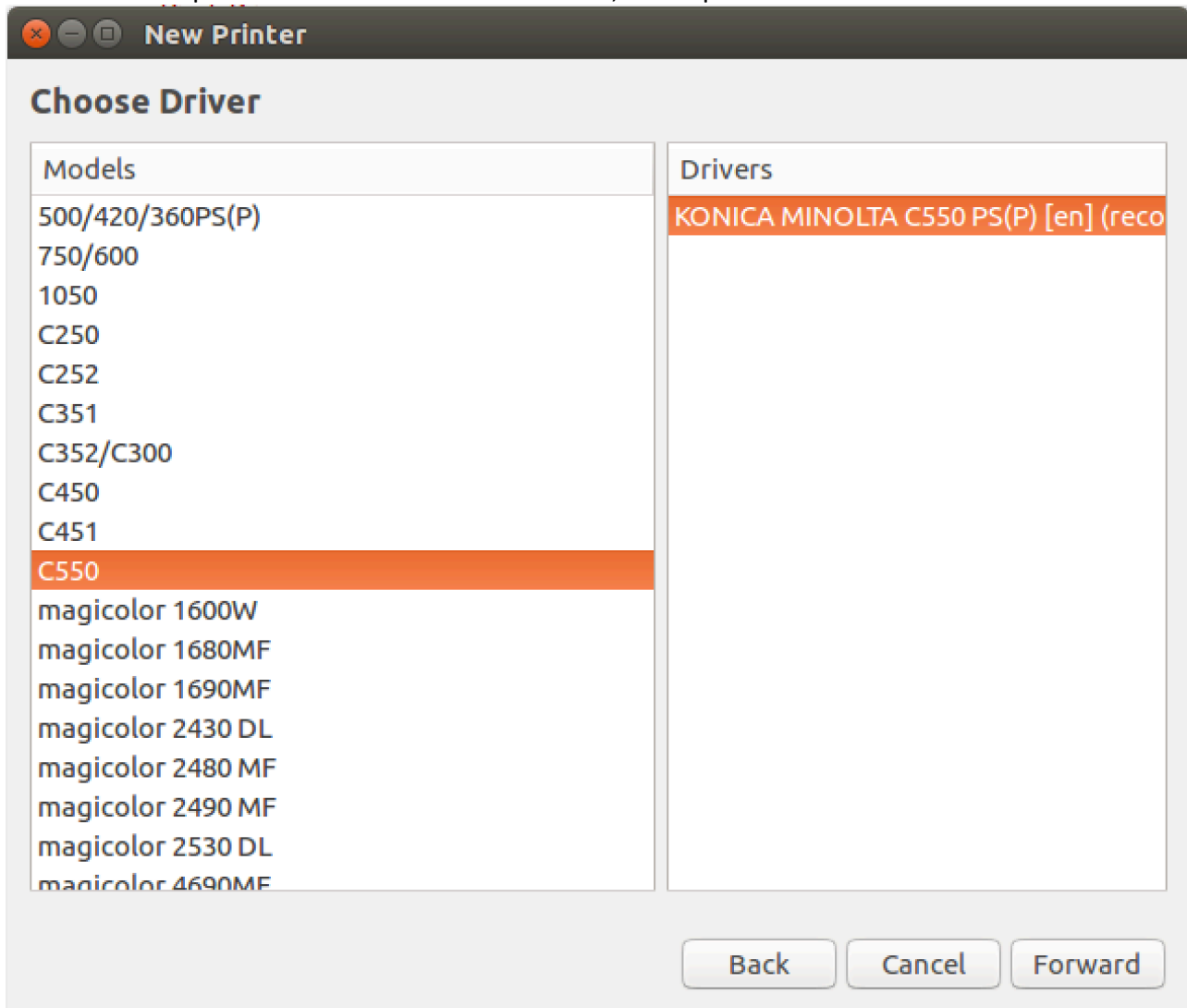


If you run into any additional software under the installation, simply accept them and proceed

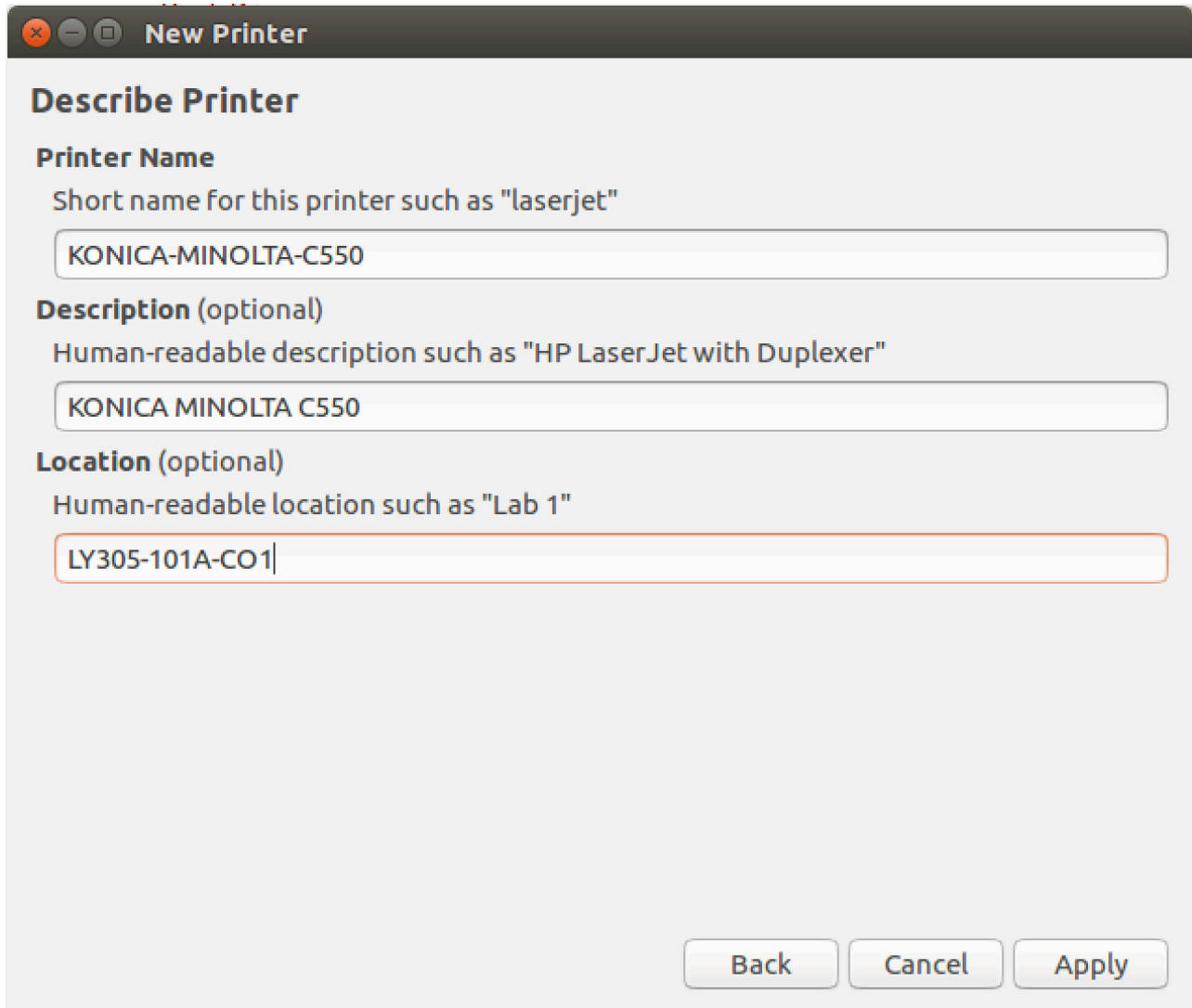


Now you need to figure out the make and model of the printer, usually it would be written on the top, front or side of the printer.

In this case the printer is a KONICA MINOLTA C554, so we pick the C550 series driver.



At the very end you pick a name and location for the printer, so that you can identify it with ease later on.



New Printer

Describe Printer

Printer Name
Short name for this printer such as "laserjet"
KONICA-MINOLTA-C550

Description (optional)
Human-readable description such as "HP LaserJet with Duplexer"
KONICA MINOLTA C550

Location (optional)
Human-readable location such as "Lab 1"
LY305-101A-CO1

Back Cancel Apply

When you print a test page, you will be greeted with a login box, this is not your computer credentials you need to use. Use your DTU login like so:

Username: sXXXXXX@win.dtu.dk

Password: *****

If the printer is installed correctly you would see your page being printed, if it isn't installed correctly then try to pick another driver for the printer.

For some printers, there's a series driver or a universal driver to use, or you could pick an older version of the printer, just make sure it's the same manufacturer.